

# MONTHLY MEMBERSHIP PROGRESS REPORT

District 4 C1

Results as of: 3/31/2026

GMT:

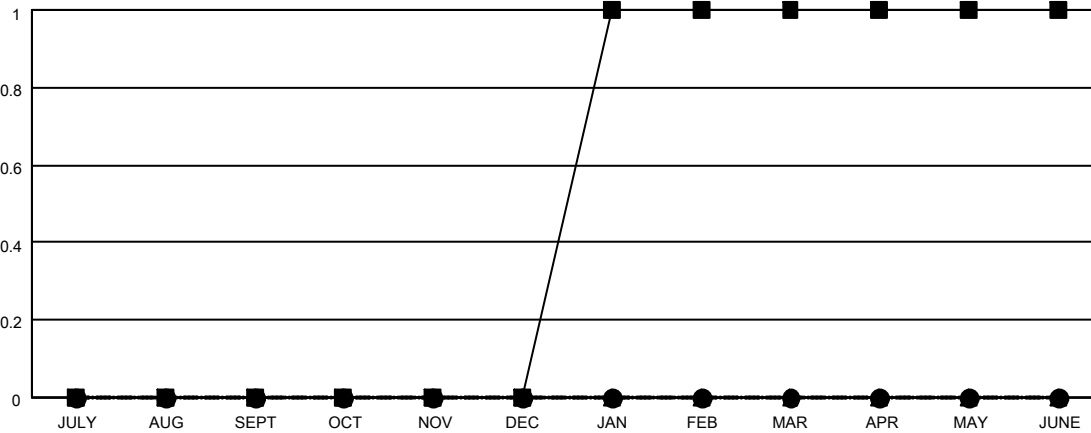
LOCATION CALIFORNIA

GMT CA

Clubs			
RESULTS FOR 2025-2026			
QUARTER	NEW CLUB GOAL	NEW CLUBS	DROPPED CLUBS
JULY/AUG/SEPT	0	0	0
OCT/NOV/DEC	0	0	1
JAN/FEB/MAR	1	0	0
APR/MAY/JUNE	0	0	0

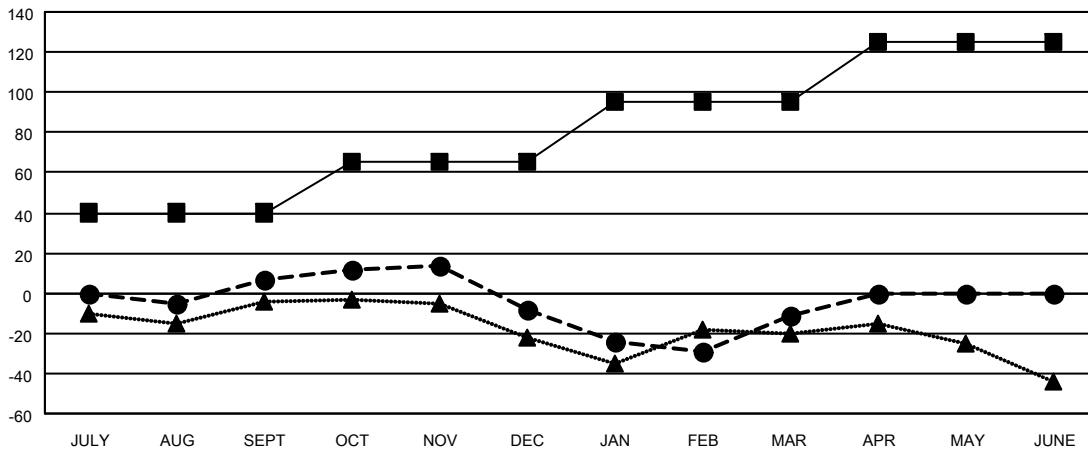
Members			
RESULTS FOR 2025-2026			
QUARTER	MEMBER GROWTH NET GOAL	MEMBER GROWTH ACTUAL	DROPPED MEMBERS ACTUAL (including transfers)
JULY/AUG/SEPT	40	34	25
OCT/NOV/DEC	25	17	30
JAN/FEB/MAR	30	31	31
APR/MAY/JUNE	30	0	0

GOALS AND ACTUAL NEW CLUBS CUMULATIVE



- - CURRENT YEAR GOALS FOR NEW CLUBS
- - CURRENT YEAR ACTUAL NEW CLUBS
- ▲ - LAST YEAR ACTUAL NEW CLUBS

GOALS AND ACTUAL MEMBERS CUMULATIVE



- - MEMBER GROWTH NET GOAL
- - MEMBER GROWTH ACTUAL
- ▲ - LAST YEAR MEMBERSHIP ACTUAL

DROPPED CLUBS: 1	
<b>DROPPED MEMBERS</b>	
DECEASED	12
CLUB CANCELLED	16
OTHER	57
<b>TOTAL</b>	<b>85</b>

18 CLUBS OF 35 ADDED 1 OR MORE NEW MEMBERS

GENDER DISTRIBUTION	
MALE	473 (61.27%)
FEMALE	299 (38.73%)

[CLICK HERE FOR CUMULATIVE MEMBERSHIP DATA](#)

TOTAL FAMILY UNIT MEMBERS	147
FAMILY MEMBERS PAYING HALF DUES	76